

NEW YEAR SPECIALS

PYE 12" OSC. FANS \$23.50
 NATIONAL 16" DBLE OSC. FANS, \$39.50
 PORTABLE BARBECUES \$6.50
 STEAM & DRY IRONS from \$11.95

Many other bargains available on application.

BENNETTS ELECTRICAL CENTRE

247 DARLING ST., BALMAIN
 Phones: 82-3398, 82-2862

THE LINK

CIRCULATING THROUGHOUT BALMAIN EAST, BALMAIN, BIRCHGROVE, ROZELLE, WHITE BAY, PARTS OF LILYFIELD AND LEICHHARDT.

Registered under the Newspaper Act, 1898

Address all communications to the Editor, 10 Birchgrove Road, Balmain, 2041
 PHONE: 82 1214 PHONE: 82 1224

A Reliable Watch for all
 the Family at

BLAND'S

Balmain's Reliable Jewellers

Established 80 years

WATCHMAKERS & JEWELLERS

17 ROWNTREE ST., BALMAIN

Phone: 82-2972

VOL. 48—No. 44

CIRCULATION 9000 COPIES WEEKLY

WEDNESDAY, FEBRUARY 5, 1969

BALMAIN'S HOUSING PROBLEMS

A report recently prepared by the Architectural and Town Planning Sub-committee of The Balmain Association urges Leichhardt Council to take active steps to encourage housing redevelopment in the "Balmain peninsula", where a serious housing problem exists.

The sub-committee says the Council should amend the Leichhardt Planning Scheme ordinance, which restricts cohesive housing development, and should initiate constructive housing proposals such as "group housing".

In the area north-east of Victoria Road, containing Balmain, Birchgrove and part of Rozelle, there are large areas of poor-quality housing alongside and intermingled with extremely desirable residential areas.

The pattern of existing re-development is confined to either individual renovation of single dwellings, or construction of indiscriminately located and often ugly 3-storey blocks of flats or home units.

Absence of co-ordinated planning, particularly when combined with the apparently indiscriminate growth of industry, has already proved environmentally disastrous in certain areas.

Topography

If this situation is not constructively rectified, Balmain will be destroyed as a living area of adequate amenity.

Balmain's topography provides ideal opportunity for implementation of a plan which would, in principle, combine

high-rise mixed usage of flats, shopping and community facilities on the ridges with medium/high density housing on the slopes, stepping down to the water and generally decreasing in height.

Leichhardt Municipal Council, in conjunction with the State Planning Authority, has the opportunity and power to realise Balmain's residential potential despite difficulties imposed by other government and semi-government bodies.

The sub-committee believes Council must:

- Assist the individual regenerative process by requesting the State Government to make loans to private individuals, through the Council, for the renovation of houses that are basically sound, but require improvement to meet current standards.

Groups

- Encourage development of group housing, such as are commonly known as town houses, terrace houses, villa homes or courtyard houses.

- Amend the Planning Ordinance to provide the framework for: flexibility and variation of dwelling types within residential zonings; rebuilding terrace or semi-detached houses on existing single sites, and permitting this in Residen-

tial "A" or "B" zoned areas; and restricted areas of high-rise, high-density mixed usage development on the ridges.

The sub-committee contends that a practical and economic solution of this districts housing problem is "Planned gradual renewal".

It considers that a combination of totally new development and renovated and revitalised areas will undoubtedly be the pattern of future growth in Balmain.

This must be controlled and guided by the responsible authority so that the suburb's character and amenity are not destroyed.

Renewal

The report refers to a study in Deeplich, England, which examined costs of gradual renewal in contrast to those of total new development, in an area containing some 300 terrace dwellings, 40% of which were beyond economic renovation.

The planned process of gradual renewal was to demolish unfit houses and replace them with new housing, while basically sound houses were brought up to modern standards.

The gradual renewal scheme provided more dwellings than did complete redevelopment, and at much reduced cost.

In Balmain this sort of thing could be carried out, through the Council, by private individuals, the Government, or developers.

It is essential that ordinances be framed and zonings provided to make renewal economically profitable.

LOVELY OLD CHURCH



St. Mary's Church of England in Darling Street, Balmain East, is one of the Balmain district buildings recently placed by The National Trust of Australia (N.S.W.) in a special classification: "Of considerable interest, the preservation of which should be encouraged".

The church will conduct a special week

of activities this month, with the theme of "God, Faith and You". (See story elsewhere in this issue)

ABOVE: The lovely old stone building, completed in 1846.

BELOW: The chancel, one of the most beautiful of any church in Sydney. It is mostly in its original form.

Douglass Baglin photos

Riverside School Meeting

Formation of a Parents and Citizens' Association for Riverside Girls' High School is to be discussed at a special meeting next Tuesday night.

The Mothers' Club has voted in favour of the formation of a P. & C. Association, and hopes to interest fathers and working mothers in these essential activities.

The meeting will be held in the school's gymnasium on Tuesday, February 11, at 7.45 p.m. Headmistress of the school, Miss Robbins, extends a special invitation to all interested parents and friends to attend.

COLUMN 9 COUNCIL PROBLEMS

Great problems confront the new Leichhardt Council in its first year of operation.

- Replacement of the tremendous population loss in Balmain and Rozelle over the last seven years.

- Establishment of necessary amenities essential for a rebuilding programme.

- Attractive conditions and concessions for developers to capture interest in the possibilities here.

- Re-zoning of unused industrial land and a halt to further industrial development.

The quality of this Council will be reflected in its achievements.

Generally speaking, the new aldermen advocated in election pamphlets establishment of parking areas. It is now up to them by deed not words to honour those promises and without delay implement steps to ensure that this becomes a reality.

One suggestion to alleviate Balmain's critical parking problem is to move back the perimeter of Gladstone Park where it fronts Booth Street for a sufficient distance to permit of angle parking in that street instead of end-on parking.

This would not entail removal of any usable parkland or destruction of trees, yet would serve both the shopping centre in business hours and visitors to Balmain Hospital.

Shoppers demand parking areas, and shopkeepers depend on shoppers. No shopping centre can function effectively without provision for customer parking, and no suburb can hope for development unless it is obvious to developers that it is administered by a Council conscious of modern needs.

To achieve progress Council will need to take the reins and not be a figurehead without control, passing motions purely on advice and acting on matters which appear only on the agenda

UNITED PROTESTANT ASSOCIATION OPPORTUNITY SHOPS

Have you any surplus goods?
 CLOTHING CROCKERY FURNITURE
 ETC. ETC. Anything saleable.

RING NOW and our carrier will call.
 Sales from such efforts support 250 children,
 350 aged people

PHONES: 26-5296 26-5887 or
 Room 23, 280 Pitt Street, Sydney. 2000

BALMAIN POLICE-CITIZENS BOYS' CLUB RUGBY LEAGUE ANNUAL MEETING AND ELECTION OF OFFICERS

TO BE HELD AT CLUB PREMISES

372 DARLING STREET, BALMAIN

ON TUESDAY, FEBRUARY 8, 1969

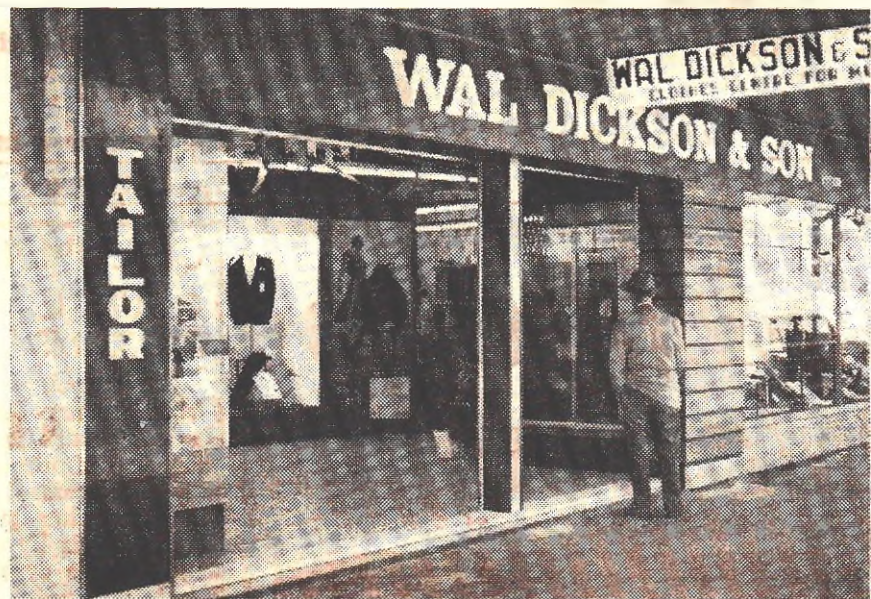
ON TUESDAY, FEBRUARY 11, 1969

ON TUESDAY, FEBRUARY 18, 1969

COMMENCING AT 8.00 P.M. SHARP

Persons interested in acting as coaches, managers and selectors will be most welcome at this meeting.

If you're a newcomer or an old hand



Wal Dickson and Son will serve you best

Sydney's oldest store catering exclusively in menswear

253 Darling Street Balmain (opp. TAB). Phone 82-3379



FRANCES

Ask for Frances, who is an expert and specialises in permanent waving. She will advise you about styling and tinting.

JUST FOR YOU

LUXURY PERM

\$3.00

Including Style Cut and Set.

EXPERT BARBER

Cut all Modern Styles.
Reduction for Pensioners and Special Attention for Children.

FREE LOLLIES AND BALLOONS.

THE WELL-KNOWN

CARAVELLA SALON

301 DARLING ST., BALMAIN
82-2309

299 DARLING ST., BALMAIN
82-3910

REAL ESTATE

Entrust your most valuable asset to the people most qualified to offer you a complete advisory service. Sales, lettings, auctions, valuations, insurances. Professional knowledge to assist you. Demand and get the best advice.



F.A. BAKER, SILVER PTY. LTD.

107 VICTORIA ROAD, ROZELLE 2039.

HOUSE AND LAND AGENT, AUCTIONEER

82 0113-4 — NIGHT 37-6113



WATCH-HOUSE RESTORATION

Restoration of the historic face of old Balmain made another step forward last week when work commenced on restoring to its original condition the stonework of the old Watch-House.

This is part of the work by The Balmain Association in its self-imposed duty of guarding the national heritage in this old part of Australia.

The Watch-House is a National Trust Property at 179 Darling Street, which is being restored to provide a museum, children's library and community facilities, as well as headquarters for The Balmain Association activities.

As already reported in "The Link", first major item was renewal of the slate roof over the main building and the cell block at the rear.

The programme includes the furnishing of the police charge room with authentic furniture and relics.

The work is dependent on contributions by members of the Association and voluntary labour.

Hence the work of sandblasting the stonework, to remove its many coats of paint, which is being done as a voluntary effort by a company specialising in property cleaning and restoration, will prove a major item of assistance.

The company's sandblasting crew commenced the sandblasting last week.

The company's manager of cleaning and restoration work — Mr. R. F. Olsson, who lives in Balmain — told "The Link" that most of the stone was found to be in good condition, although it was aged.

After the unknown number of coats of paint had been removed, it was seen that there were three different types of stone used in the building. Some of it was in

better shape than other parts.

Mr. Olsson thought The Balmain Association was doing a marvellous job. "We should look after our buildings which have an historical interest," he said.

The Watch-House was one of a pair of police stations designed by Edmund Blacket, Colonial Architect, the other being at Victoria Cross, N.S.W.

Work started in 1854. In 1864 some repairs were carried out, white ants having destroyed most of the floors.

The building remained headquarters of the local constabulary until 1887, when the present Police Court and Post Office building was completed.

Edmund Blacket was closely associated with Balmain, in which he lived from 1871 to 1881.

PINERUA'S PHARMACY

for

ALL PHARMACEUTICAL REQUIREMENTS

384 DARLING STREET, BALMAIN

PHONE: 82-1113

PICK-UP AND DELIVERY SERVICE

Agents for Helena Rubinstein Cosmetics

WEST SYDNEY TECHNICAL COLLEGE

1969 SESSION

CRYSTAL ST., PETERSHAM, 2049

TELEPHONE No. 56 8351

Enrolments in the following courses will be accepted during week commencing 10th February, 1969, and classes will commence during the following week.

**Building Foreman/Clerk of Works
Carpentry and Joinery
Certificate Entrance
Coppersmithing
Diploma Entrance
Dressmaking**

**Dressmaking from Paper Patterns
Electrical Trades
Electrical Wiring Refresher
Elementary English (Special)
Higher School Certificate**

**House Drainage
Illumination
Fitting and Machining**

**Lingerie
Millinery
Plumbing
Plumbing Advanced
Plumbing Journeymen Refresher**

**Principles of Lighting
School Certificate
Sheetmetal**

**Slide Rule (3rd Term)
Soft Furnishings
Supervision Certificate**

**Telephony
Women's Handicrafts Unit Courses**

Enrolments will be accepted during enrolment week between 12.00 noon and 7.30 p.m.

Fees are payable during enrolment week and first week of term from 9.30 a.m. - 4.30 p.m. and 5.30 p.m. - 7.30 p.m.

Commercial classes have already commenced. Intending students should apply for enrolment without delay.

The commencement of any course will be subject to a sufficient number of students applying for enrolment.

**B. B. BAILEY
Principal
WEST SYDNEY TECHNICAL COLLEGE**

PROMOTION

Congratulations to local boy, Vic Cannon, on his promotion to Group Captain at Townsville air station.

Vic is the son of Mr. and Mrs. Cannon, of 13 Young Street, Balmain.



BALMAIN BP SERVICE STATION

MEYER MOTORS PTY. LTD.

415 DARLING ST. BALMAIN — 82-4001



SPECIAL WEEK AT HISTORIC CHURCH

St. Mary's Church of England, Balmain East, will hold a special week of activities this month, with the theme "God, Faith and You".

This is in the tradition of this historic church, which has always been in the forefront of Christian activity in the area.

The rector, the Rev. Arthur Horrex, and the parishioners have planned a week of meetings and other activities to consider the truths of the Christian faith in a relevant and helpful way.

The week will start with a family picnic to Parsley Bay on Saturday, February 15, to which members of the Sunday School, Boys' and Girls' Clubs, Junior Church Youth Group, and parents, friends and all interested are invited to attend.

Tickets are available from the rectory.

Services will be held each Sunday at the usual times of 9.30 a.m. and 7.15 p.m. During the week children's meetings will be held in the Parish Hall, Adolphus Street, and the speaker will be Mr. Ken Buttrum, a talented young worker from the Youth Department of the Church of England.

The children will share in games and illustrated talks.

Each evening, from Monday, 17th, to Saturday, 22nd, the Rev. Jim Sanders will be speaking in St. Mary's Church, and he, too, is a challenging and interesting speaker.

Singing groups, special items and other interesting segments will be included in the night meetings, and a sincere welcome is extended to all.

A men's tea, ladies' luncheon, children's barbecue and also one for the youth will be held during the week. The climax will be a parish tea at 5 p.m. on Sunday, 23rd, followed by the final service at 7.15 p.m. in the church.

Further details can be obtained from the rector (82-2794), and inquiries are welcomed on any matter calling for helpful advice.

St. Mary's Church of England is listed by the National Trust, and has an interesting historical background.

Although settlement began in Balmain in the early 1800's, many years were to pass before any steps were taken to provide the district with a church of permanent nature.

It is stated that Divine worship was first conducted in the district by the Rev. Frederick Wilkinson, M.A., in the year 1841. The building used for the purpose was a small slab and bark humpy in the vicinity of Mort's Dock.

However, as this part of the district was sparsely populated, it was found necessary to conduct services in the area near Cooper Street (now Colgate Avenue).

In the "Sydney Herald" of August 19, 1841, we read of a meeting being held two days previously by members of the Balmain Estate, when a motion was moved for the erection of a Protestant Episcopal Church, and subscriptions were invited towards its cost.

No progress is recorded until the appointment of the Rev. F. Wilkinson in 1843 over the united

parishes of Balmain and Ashfield. He initiated plans for a new church. Services at this time were being held in Adolphus Street.

It was not until January 1, 1845, that the foundation stone of a stone church and school room was laid for the Church of St. Mary, on a piece of land donated by Mr. Mitchell Metcalf.

The architect chosen was the 25-year-old Edmund Blacket, who talked the Rev. F. Wilkinson out of a Norman design in favour of one in the Decorated or 13th century English style.

The church was completed in 1846 and consecrated in 1848. It was enlarged in 1859 under the supervision of William Weaver, but has since experienced no further architectural changes except the removal of the front gable and belfry pinnacle.

Although the area has experienced great changes and fluctuations of population and social conditions, the doors of St. Mary's Church have always been open for worship.



Smart women everywhere are discovering HILTON Supp-hose nylons make walking a pleasure

No more tired legs with HILTON Supp-hose — they massage leg fatigue away. Fashionably sheer and long-wearing. real value at 42/- pr.



SEAMLESS SUPP-HOSE

THEY EASE TIRED LEGS.

All Shades.

\$4.20

PAIR

LADIES' PANTI HOSE

All Sizes and Shades.

99c

PAIR

BIKINI STYLE

\$2.00

PAIR

GOLDSMITHS are Hosiery Specialists

36" PLAIN CHIFFON 79c YD. All Wanted Shades

36" IMPORTED SILKS \$1.45 YD. Smart Range

36" FIGURED & FLORAL JERSEY \$1.20 YD. Drip-dry, Crease Resistant

36" Floral Straw Cloth 59c YD. Good Washing and Wearing

36" FLORAL CAMBRICS 39c YD. SPECIAL For School Sewing

36" CORDED CHECK ZEPHYR 35c YD. Big Range of Assorted Checks

BARGAIN CENTRE COMES TO BALMAIN

Opening at CHELMSFORD HALL Montague Street (opp. Post Office)

Thursday, 30th January, and every following Thursday, 9 o'clock to 4.30

Ladies', Men's and Children's Wear. Kitchenware, Foodstuffs. BARGAINS GALORE.

PIANO LESSONS

Mrs. N. E. Woittiez Teacher of Pianoforte 461 Darling Street Balmain

Pyramids in Egypt contain plasterwork executed at least 4,000 years ago, which is still hard and durable.

BALMAIN R.S.L. SOCCER FOOTBALL CLUB

Enrolment of Players

The above Club will be enrolling players for the 1969 Season on Saturday, 8th February, at 2 p.m., at King George's Park. No joining or playing fee is charged. Players from 6 years and upwards are required for Competition and parents who have boys 4 and 5 years old, these will be coached in our nursery teams. Further particulars can be had from

W. M. Gourlie, Hon. Secretary, 18 Colgate Ave., Balmain. Phone 82-1691

THE CAMEO

CREME COLD WAVE DE LUXE

ONLY \$3.75 Including Style Cut and Set

So confident of your complete satisfaction with this Super-Wave, we supply a written, unconditional guarantee of its excellence!

MAISON LEWIS

Air-conditioned Salon.

655 DARLING STREET, ROZELLE (next Post Office) — PHONE: 82-1503



Morning & Afternoon Tea Available

BALMAIN LEAGUES CLUB



ENTERTAINMENT GUIDE

(FOR THE BENEFIT OF MEMBERS AND FRIENDS)

THURSDAY, FEBRUARY 6:

PARTY NIGHT

- DANCING WITH PRIZES
- COMPETITIONS

FRIDAY, FEBRUARY 7:

JOHNNY NICOL VOCALIST

SATURDAY, FEBRUARY 8:

2 FLOOR SHOWS 9 p.m. and 11 p.m. with

DAVE GRAY & PARTNER

COMEDIANS and

JACK BILLINGS &

CHRISTINE DANCERS

SUNDAY, FEBRUARY 9, 3.30 p.m.:

THE PRINCETONS VOCAL DUO

7.30 p.m.:

ROD & MARGARET

VOCAL DUO

CHRIS KIRBY

VENTRILOQUIST

DEE DONOVAN

COM. VOCAL

MONDAY, FEBRUARY 10:

LADIES' SNOOKER

TUESDAY, FEBRUARY 4

LADIES' SPORTS

Dancing Every Thursday, Friday, Saturday Nights, Sunday Afternoons with Frank Crisafi, June Keep, Keith Foster

JENSEN'S are not under New Management. JENSEN'S have not stopped being exclusive retailers for

RONSON • PARKER • SHEAFFER
ORREFORS CRYSTAL • CORNING WARE
UPSALA EKEBY POTTERY

ORIS WATCHES • EUROPA & WESTCLOX

JENSEN'S have not stopped selling all that's better in tobacco and cigarettes.

WE'VE JUST GONE OUT OF OUR TINY LITTLE MINDS

and have added to our range all that's new and swinging in the world of gifts.

ALL the newest designs;
ALL the latest designs;

MOBILES • POSTERS • ENAMEL WARE
• POTTERY

- P.S.: 1. The innermost colours: brilliant orange, deepest blue, mellow yellow.
2. We have again extended our Orrefors crystal ranges. The new designs from \$1 each.
3. We have new stocks of Akari Rice Paper Shades, such as Art Nouveau Ball, Tiffany Shade, Off White Shade.

JENSEN'S GIFT STORE

249 DARLING STREET, BALMAIN

PHONE: 82-2336

SANS HARDWARE

82-1760

WE DELIVER

- TV AERIALS from \$3.75
- VANITY BASINS, \$10
- LAMINATED COFFEE TABLE TOPS, \$1.75
- TABLE LEGS from \$1.25
- PAINT from \$2.85 gallon
- 3 WALL CUPBOARDS from \$5 ea.

WE CUT GLASS

82 BEATTIE ST.
BALMAIN

POTTERY
EVENING CLASSES
Enquiries:
BILL BAXTER
46 LOUISA ROAD
BIRCHGROVE
82 1622

R.S.L. CORNER

Attention to all parents who have boys wishing to play with the Bal-R.S.L. Soccer Club:

You can enrol your sons on any Saturday at King George's Park. This is free football—there is no joining fee, and nothing to pay each week. You only supply football boots; and this year black trousers are required (not white, which makes it easier for mum!).

The club would like all members and intending members to read the paid advertisements in this paper. There are three annual meetings coming on—sub-branch, sports club, and club—and all are very important. It is in your hands to elect the members who in your opinion will do the work called for by the position.

As usual, over the week-end the entertainment was "tops". Satur-

day night Johnnie Franklin really pleased the members, especially with his community numbers. On Sunday morning Brian Bradley and Noel Yates "killed" the sick paraders, but the treasurer was annoyed as they were still working at ten past one!

On Sunday afternoon the Ray Seagar packet show went particularly well.

Friday night's knock-out euchre tournament was won by Billy Ferguson and Bill Clarke, from Victor Sterry and Kevan (Wishbone) Lynch.

Members are reminded that the limit is 64 players. Even Dave O'Rourke snr. missed having a game; and he and Kathy never miss a Friday night at the club.

The jackpot Monte Carlo this Sunday night will be worth \$50.

Gregoir's

EAST BALMAIN SALON

79 DARLING STREET — PHONE 82 3816

If your hair is not becoming to you, you should be coming to me.

TWO WEEK SPECIAL
EVERY DAY EXCEPT SATURDAY
HALF PRICE HAIRCUTS
FOR CHILDREN — PENSIONERS

- Reduced rate for Pensioners (Protein Perm \$4.25, Mon., Tues., Wed. only).

- CUTTING \$1.00
- RAZOR CUTTING \$1.20
- PERMING from \$5.50

Formerly Pat McVean Salon

PROFESSIONS

Ballet Academy

- Jazz Ballet . . . All ages
- Classical . . . All ages (R.A.D. Exams)

Classes recommencing Friday, 14th February, Presbyterian Hall, Campbell St., Balmain, from 4.30 p.m. Enq. 82-2916

POODLE CLIPPING SHAMPOO

Nails and Ears.
Dogs Groomed.
All Breeds.
PICK-UP AND DELIVER
A.H. 82-5192



For Front
end alignment
and wheel
balancing see

BALMAIN BP
SERVICE
STATION

MEYER MOTORS
PTY. LTD.
415 DARLING ST.
BALMAIN—82-4082

BP PETROLS
contain BENZOL!

Balmain-Rozelle R.S.L. Club

Phone: 82-2569 Members' Phone: 82-1601

SPECIAL NOTICE: All Members please take note that this Sunday, 9th February, all nominees for the Committee of Management for 1969 will be presented and introduced to all the Members by the Returning Officer, Mr. Robert Morrison.

FRIDAY: Knock-out Euchre Tournament—\$60. Restricted to 64 players, and only Members and Lady Friends entitled to compete.

SATURDAY: Brenda Gayle, star of the TV show, "The Hunted".

SUNDAY SICK PARADE: The Duellies Duo. 3 till 6 p.m.: The Dominoes Trio, backed up by The Coasters Quintet, 7 till 10 p.m.: Dance Night—Prizes for Barn Dance and a Jackpot Monte Carlo worth \$40. Also a Sports Club Outside Fishing Trip. Launch leaves Elliott St. Wharf at 4 a.m.

TUESDAY, 11th FEB.: Annual Sub-Branch Meeting. All Officers to be elected off the floor for 1969.

THURSDAY, 13th FEB.: Club Voting 5 till 9 p.m. in Mixed Lounge.

FRIDAY, 14th FEB.: Club Voting 5 till 9 p.m. in Mixed Lounge.

SATURDAY, 15th FEB.: Club Voting 10 a.m. till 6 p.m. in Mixed Lounge.

TUESDAY, 18th FEB.: Annual Sports Club Meeting with Election of Officers for 1969, 5.30 p.m. sharp.

WEDNESDAY, 19th FEB.: Annual Club Meeting. Results of Elections and Auditors' Report for 1968.

WEDNESDAY, 26th FEB.: Men's Prawn Night. Auditorium opens 5 p.m. Prawns come on at 6.30 p.m. Artists: Uncle Dave Gray and Gerry Graham. Tickets available Bob Elliot (Exchange), Tommy Brynon (Riverview), Noel Kelly (Bald Rock and Welcome), George Laughton (Sir William Wallace), Jimmy Nash and Frank Barbour (Commercial), Tommy Quinn (Palmolive) and Ron Willis (Cockatoo Island).

LEARN TO DRIVE THROUGH

LAVIS DRIVING SCHOOL

SATISFACTION GUARANTEED
Joe Meulen (Prop.) Phone: 81 3297,
81 2757

PROPERTIES WANTED

NOW

- BALMAIN
- BIRCHGROVE
- ROZELLE

Sell Now For Top Price

We have buyers waiting for all types of properties in or out of repair in above areas.

Immediate and positive action from our large sales force.

- FREE VALUATIONS AND ADVICE

BALMAIN ESTATE AGENCY

347 DARLING STREET, BALMAIN

Phone 82-0681 (6 lines)

After Hours 92-9552

Balmain Rozelle R.S.L. Sub Branch Club

Attention All Members

All positions on the Committee of Management for 1969 have to be voted for.

- 1 President
- 1 Treasurer
- 2 Vice-Presidents
- 8 Committee Men

Minute Secretary to be picked from the 8 Committee Men.

Every nomination for a position on the Committee of Management must be nominated and seconded by 2 Ordinary Members who are financial for 1969, otherwise their nomination becomes null and void. Nominations close on Sunday, 9th February, at 6 o'clock.

Voting dates on Club premises in the Mixed Lounge, 5 till 9 o'clock. Thursday and Friday, 13th and 14th February, and 10 o'clock till 6 o'clock. Saturday, 15th February.

The Club's Annual Meeting will be held on Club premises on Wednesday, 19th February, commencing 8 p.m. sharp.

ROBERT MORRISON,
Returning Officer for 1969.

MATERIAL

Goldsmith's dress material is in a fabulously smart range of checks, florals and prints—all keenly priced to suit the thrifty shopper.*



FOR EXPERT MECHANICAL REPAIRS see BALMAIN BP SERVICE STATION MEYER MOTORS PTY. LTD.

415 DARLING ST. BALMAIN—82-4082

Call in for expert advice!

BALMAIN FIRE SPECTACULAR

The storeman of a Balmain factory was hosed by firefighters while he drove three cars whose roofs were burning out of the burning premises into the street last Saturday afternoon.

He was Jackie McGoogan, employed by Golden Cobb Products Pty. Ltd., seed merchants, of Darling Street, whose premises were damaged extensively in a spectacular blaze, calling for the services of firemen from five brigades.

The company's managing director, Mr. D. R. Denne, praised the efforts of Balmain fire brigade, whose work resulted in

the saving of five nearby shops and residences from catching alight.

He also praised the Balmain police for their co-operation during the fire.

Mr. Denne said police investigations were continuing, although there appeared to be no suspicious circumstances. Cause of the fire was unknown.

Damage had not yet been assessed, but it would be covered by insurance.

The fire destroyed the company's seed store and packaging department. However, through the kindness of several business neighbours, it hoped to begin operations again quickly.

Among the offers of help was one of space for packing (without rental), and the loan of a lorry.

Giving particulars of the occurrence to "The Link", Mr. Denne was quite intrigued with the approach of his staff to the whole affair.

"Many of them rang up to find out what happened, but they weren't at all interested in my welfare—only in that of 'Cuddles'," he said.

"'Cuddles' is the company's cat, and everybody was quite concerned in its welfare. But Cuddles hasn't been seen since the fire. It apparently just 'took off'."

Mr. Denne wondered if any local firm was interested in giving temporary employment to the five packing girls employed by the company. Collectively, their periods of employment with Golden Cob totalled 106

CODOCK'S SPORTS, RECREATION AND FOOTBALL CLUB LTD.

70 MULLENS STREET, BALMAIN
PHONES: 82-2176, 82-3987

WEDNESDAY: CARPET BOWLS.

THURSDAY NIGHT,
OLD-TIME DANCING
with PLEASURE MAKERS' BAND
A. GAMBLE, Compere

Friday — Saturday — Sunday Night:
DANCING WITH
BOB MITCHELL QUARTET

GUEST ARTIST FOR THE WEEK-END:
SATURDAY, 8th FEBRUARY:
KEVIN BARKER

Popular Gold Coast Pop Star
SUNDAY MORNING, 10.30 a.m. to
1.30 p.m.:

SING-A-LONG
BILLY WISE, Compere
MIDWAY AND STONE SHOW
Comedy Duo

SUNDAY AFTERNOON:
Feature Film, commencing 3.00 p.m.
"CARRY ON COWBOY"

Sid James and Kenneth Connor
Band commencing 5.30 p.m.

SUNDAY EVENING:
THE ALLISONS
Juggling and Cycling Act

BIRCHGROVE HOME UNITS

on the peninsula

"BIRCHGROVE HOUSE"

FABULOUS WATER PARK-BRIDGE VIEWS

From only \$11,500 to \$12,500

Open for inspection Sat., Sun., 2 till 5 p.m.
67 Louisa Road, Birchgrove

This architect-designed block of 18, 2-bed. units, built of popular blond brick with sun-drenched balconies, is tastefully designed with Kitchen, Dining, Living Rooms, taking advantage of panoramic views. Ferry to city. Bus only 5 minutes.

For immediate inspection, contact Allan Robertson from

A. NORTON PTY. LTD.

198 LYONS ROAD, DRUMMOYNE. 81-1351, 81-1146, A.H. 81-3136
THIS IS A VIEW FROM BALCONIES



Or Local Conjunction Agents:

JACK ZUBER, SHAW & CO.

409 DARLING STREET, BALMAIN (opp. Police Boys' Club), 82-3097, 82-3562



BUYING OR SELLING REAL ESTATE?

GEORGE CLUBB & SONS

EST. 1880

REAL ESTATE AGENTS,
AUCTIONEERS & VALUERS

Specialists in
PROPERTY MANAGEMENT
FINANCE
INSURANCE
INDUSTRIAL SALES

RING FOR VALUATION:

82-1056-7-8

GUARANTEED
TV
REPAIRS

FULLY QUALIFIED
TECHNICIAN

PHONE 82-2026

Television and Electronic Equipment Service

CHURCH NOTICES

BALMAIN-ROZELLE METHODIST MISSION

Balmain—
9.30 a.m.: Sunday School,
1.30 a.m.: United Service,
Campbell Street—
7.15 p.m.: United Service,
Montague St., Balmain.

Rozelle—
3.30 a.m.: Rozelle Methodist
Mission,
Sunday School,

7.15 p.m.:
Rozelle Methodist Mission

ST. MARY'S CHURCH OF ENGLAND

3rd SUNDAY AFTER
EPIPHANY

9.30 a.m.: Holy Communion.
9.30 a.m.: Open Sunday
School.

7.15 p.m.: Evening Prayer.
Arthur H. Horrex.

BALMAIN PRESBYTERIAN CHURCH

Balmain—Campbell Street.

9.30 a.m.: United Methodist-
Presbyterian Sunday School

9.30 a.m.: Morning Worship
Combined Methodist and
Presbyterian Service.

7.15 p.m.: Evening Combined
Service, Methodist Mission
Montague Street.

Church of England ST. JOHN'S PARISH CHURCH

Cnr. Birchgrove Road and
Spring Street, Balmain.

SEXAGESIMA SUNDAY SUNDAY

7.30 a.m.: Parish Communion.

10.15 a.m.: Holy Communion.

10.15 a.m.: Sunday School.

7.30 p.m.: Evensong.

Holy Communion.

Wednesday at 11 a.m.

Rector: David Williams.
82-1396.

ST. PAUL'S PRESBYTERIAN CHURCH, ROZELLE

9.45 a.m.: Sunday School.

11.00 a.m.: Church Service.

7.15 p.m.: Evening Service.
Minister: Rev. L. A. Martin.

ST. ANDREWS CONGREGATIONAL CHURCH

10 a.m.: Family Service.

6.30 p.m.: Meditation.

Minister:
Rev. F. Lambert-Carter

PAY AS YOU WEAR

EASY WEEKLY PAYMENTS
IMMEDIATE POSSESSION

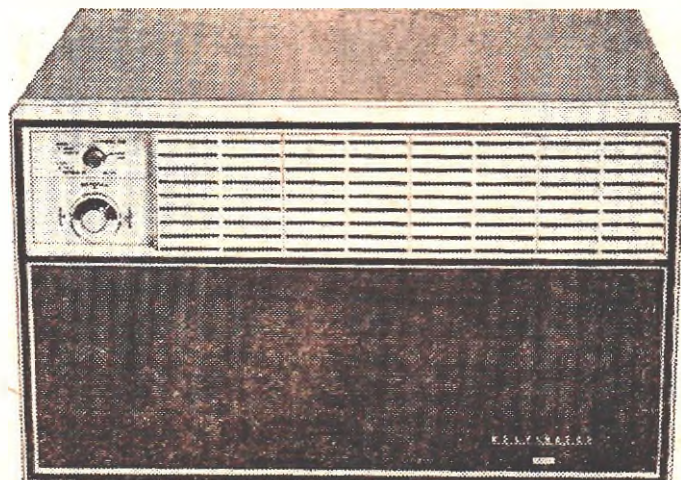
LADIES' WEAR, MEN'S WEAR,
CHILDREN'S WEAR, etc.

ASSOCIATED STORES
625 DARLING ST., ROZELLE

PHONE: 82-2961

82-3398

Ring this number: No sweat.



Kelvinator 'refrigerated' air conditioners

MOTOR FUNERALS LIMITED
 at 93 Victoria Road, Rozelle
 Dignity, Solemnity and Courtesy Assured
 For Prompt Attention:
 Phone: 82-1141 (all hours)

KITCHENMAN
 Repatriation Department Wing
 CALLAN PARK HOSPITAL
 for kitchenmen to carry out general kitchen duties. Applicants must hold a current Class 3 driving licence.
 SALARY: Within the range \$78.79 per fortnight to \$85.88 per fortnight. Plus a daily allowance when required to drive a motor vehicle.
 CONDITIONS: Forty hour week, shift work, with penalty rates payable for weekend duty. Three weeks' annual recreation leave. Liberal sick leave. Four and one half months' furlough after 15 years' service. Uniforms supplied and laundered free. Applications should be forwarded to: Medical Superintendent, Repatriation General Hospital, CONCORD, 2139.
 or for personal interview, phone the Catering Manager, 73,041 extension 374.

PLUMBER
 LICENCED
 PLUMBING, DRAINING, GASFITTING, GUTTERING, DOWNPIPES, ROOFS
56 3611
 FOR PROMPT, EFFICIENT SERVICE
D. QUINLAN
 225 ELSWICK ST. LEICHHARDT

UNITED PROTESTANT ASSOCIATION COLLECTORS
 Applications are sought from men and women to act as collectors for the above association, to which donations for its charitable work are given free.

New members are being sought for all Balmain Boys' Club activities, which are in full swing after the Christmas holidays. Boys wishing to learn in speedy radio controlled service vans. or take part in judo, wrestling, boxing, gym-nastics, trampolining, weightlifting and body building, table tennis, electronic hobbies, drum corps, St. John Ambulance cadet corps, cricket, baseball, Rugby League and Soccer should attend the club on any night—Monday to Friday in-clusive. Club membership is free of charge, and is available to boys and young men between the ages of 8 and 21 years. Instructors and supervisors are also required for all these activities. Persons able to give some time to helping boys are asked to ring Sergeant Stone on 82-2234. The club's Rugby League section will hold its annual meeting and election of officers at the club premises, 372 Darling Street, Balmain, on February 11, at 8 p.m. There will be no shortage of players, but the club will be short of coaches, manager and selectors. Mr. Ray Duncombe has resigned as billiards and snooker instructor.

Boys' Club

E. S. WILNE
 Ld. Plumber, Gasfitter and Drainer
 427 DARLING STREET, BALMAIN
 82-1834 89-3478
 Modernise your Bathroom & Kitchen
 Install a Hot Water Service
 Easy Terms. Payable Monthly.

HOME IMPROVEMENTS OF ALL KINDS FREE QUOTES
BILL STEWART
 82-4833

Wanted for Cash PIANOS
 of Trade in our New Lease-Plane or reconditioned Piano or Player.
 56-5082
 or 602-4014 After Hrs.
 McFarland's of Marrickville
 Lick Printing Pty. Ltd.
 10 Birchgrove Road, Balmain

HOME BUILDING SUPPLIES
 168 EDGEWARE RD. ENMORE. 51-5277
 PAMM PAINTS \$3 GALL.
 TILES & PRICE, \$1.80 SQ. YD., FROM BATHS \$38, VINYL FLOOR ESTAL \$19, BASINS \$8, CAST PANS FROM \$7, BASIN & PED. TOILET SUITES \$28, TOILET BROCHURES.

AGART INSTALLATIONS
 Electrical Contractor
 Domestic & Commercial Installations
 82-1584

BUILDING PLANS
 Specifications for Council Flats, Homes, additions, Concrete structural plans, 51-7060 levels, 38-3160 LESLIE CAMPBELL 263 Enmore Road Marrickville

Car Repairs
Easton Park
 82-4234
 All Work Guaranteed
 Player and Organ Repairs
 Late Palings and Beales

Geo. Schofield Piano Tuner
 Near Balmain Leagues Club
 82-2573

CASH FOR SCRAP METAL
 TOP PRICES
 OPEN SATURDAY
 168 VICTORIA RD. ROZELLE
 82-2573

TELEVISION REPAIRS
 Service within the hour by senior technicians in speedy radio controlled service vans. Repairs with a Guarantee.
71-8572 — 71-9083
 Television Repairs Pty. Ltd.

FRANK DYMOCK
 Licensed Electrical Contractor
 ALL ELECTRICAL WORK
 ● 24-HOUR SERVICE
 ● LIGHTS
 ● EXTRA POWER POINTS
 ● BREAKDOWNS
 ● SERVICE

WORK WANTED
 DAYLEM UPHOLSTERY
 Sydney's COMPLETE Repair, Repolish, Repair cover, Repolish, Repair yearly.
 5,000 satisfied customers
 All suburbs, phone 638-0421, 55-6663 or A.H. 630-1865

ALL SUBURBS CATERING SERVICE
 QUALITY from 55c
 Anywhere. Halls available
 Cakes, bouquets, photographs, everything. FREE BROCHURES.
 59-1053, 59-4578, or After Hours: 76-6999

CLEAN UP
 and Remove all Rubbish
 7 days a week
 FOR FREE QUOTE
 NEW PHONE NO. 71-9497

O'KEEFE'S UPHOLSTERY CLINIC
 FOR ALL REPAIRS TO ANTIQUE, MODERN AND OFFICE FURNITURE
 Watsons Lane, Balmain
 82-5399

BRICKWORK & FENCING
 The Nolan's Texture and Face Brick Fences. With Gates and Mail Box.
 MODERATE PRICES
 References for Work.
LEICHHARDT
 34 NORTH STREET
 PHONE: 56-3076

Wanted for Cash PIANOS
 of Trade in our New Lease-Plane or reconditioned Piano or Player.
 56-5082
 or 602-4014 After Hrs.
 McFarland's of Marrickville
 Lick Printing Pty. Ltd.
 10 Birchgrove Road, Balmain

SEWER CHOKAGE SPECIALISTS
 ELECTRIC SEWERMATIC MACHINE
 clears choked pipes, drains, sewers, etc.
 No digging, no damage.
 Collapsed sewers reconstructed.
SEWERMATIC SEWER SERVICE
74-9518 74-9978
 Ld. Plumber and Drainer
 Member of Master Plumbers' Assoc. of N.S.W.

LOCAL, COUNTRY AND INTERSTATE REMOVALS
 Packing Cases supplied for Removals & Storage
 (Established 1900)
 Phone for Quotation and Enquiries
Mackay and Stock, Balmain and Gladesville
 647 DARLING STREET, ROZELLE — 82-1207
 After Hours: 89-4396, 89-1509

ELECTRICIAN
 ALL ELECTRICAL WORK
 ● 24-HOUR SERVICE
 ● LIGHTS
 ● EXTRA POWER POINTS
 ● BREAKDOWNS
 ● SERVICE

REMOVING
 STORAGE SPACE
 STORING?
 or
 REMOVING

REMOVING
 STORAGE SPACE
 STORING?
 or
 REMOVING

REMOVING
 STORAGE SPACE
 STORING?
 or
 REMOVING

REMOVING
 STORAGE SPACE
 STORING?
 or
 REMOVING

REMOVING
 STORAGE SPACE
 STORING?
 or
 REMOVING

PROPERTY REPAIRS
 CASH or TERMS
 Our staff of qualified tradesmen can undertake the installation of Plumbing, Drainage, Gasfitting, Underpinning, Electrical Repairs and Installations, Brickwork, Ceilings, Hot Water Services, Carpentry Alterations, Additions and all Building Repairs for Cash or Terms
 FOR CONFIDENTIAL ENQUIRIES, CONTACT
J. E. HUGHES & CO. PTY. LTD.
 538 Darling Street, Rozelle
 Phone: 82-2246

FREE QUOTES — PHONE 82 2810
 MEMBER MASTER PAINTERS
JOE AZZOPARDI
 and Industrial
 Domestic, Commercial
 Painting and Paper Hanging

Roofing
 All classes of Roofs.
 Expert Slaters and Tilers.
 FOR FREE QUOTATION,
Ring 82-1637
 TERMS ARRANGED
G. Garbers
 4 ROSE STREET, BIRCHGROVE

WARREN RADFORD
 82-3407
 Member of Master Plumbers' Assoc. of N.S.W.
 For Prompt Service, Free Quotes and Guaranteed Work, please ring
GASFITTER & DRAINER
PLUMBER
 Licensed Plumber, Drainer and Gasfitter,
 Domestic and Industrial Installations,
 Gas Pipes Blown, Bath Heaters Rebuilt,
 Roots and Gutters Repaired and Renewed
 and all General Work. Sewer Repairs—
 Complete Bathroom, Kitchen and Laundry
 Modernising.

G. O. WALKER
 23 SPENCER STREET,
 FIVE DOCK — 74-9518

BALMAIN WASHING MACHINE SERVICE
 EXPERT REPAIRS TO ALL MAKES
82-3409
 Props.: H. & G. Jabour
 8-10 PALMER ST., BALMAIN (off Watson Lane)

FREE QUOTES — 82-0320
 Repairs to all makes of Appliances.
 Houses Rewired.
 Lights and Power Points Installed.
BALMAIN ELECTRICAL INSTALLATIONS
 297 DARLING STREET, BALMAIN

24 HOUR EMERGENCY BREAKDOWN SERVICE
82-3515
 AFTER HOURS

REMOVING
 STORAGE SPACE
 STORING?
 or
 REMOVING

REMOVING
 STORAGE SPACE
 STORING?
 or
 REMOVING

REMOVING
 STORAGE SPACE
 STORING?
 or
 REMOVING

REMOVING
 STORAGE SPACE
 STORING?
 or
 REMOVING

REMOVING
 STORAGE SPACE
 STORING?
 or
 REMOVING

LOCAL SERVICES